

RC601/602-FE Remote Manageable Media Converter

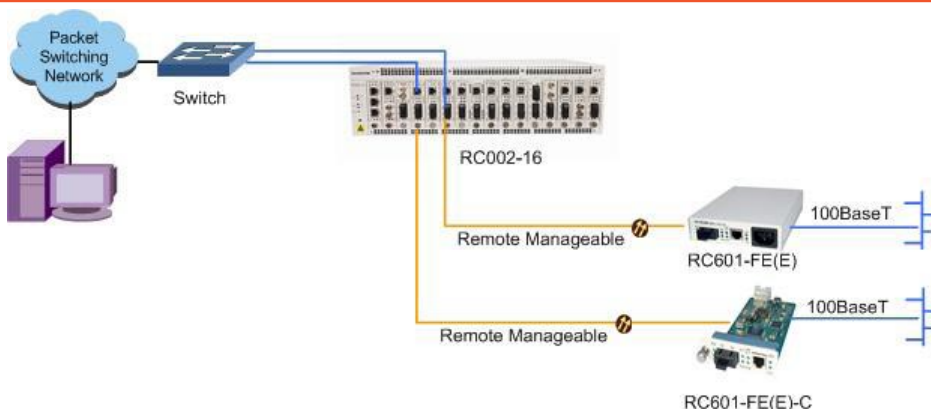
Raisecom RC series media converters are the next generation copper to fiber media converters which bridging the gap between legacy copper infrastructures and fiber growth. Raisecom's Fast Ethernet media converters offer an economical path towards extending the distance of an existing network, extending the life of non-fiber based equipment, or extending the distance between two devices. RC601/602-FE are carrier class fiber optic extension

equipments with industry leading advanced features such as remote management, Ethernet port auto negotiation, MDI/MDIX auto sensing, Fault Pass Through and etc. RC602-FE is local module which is supported in Raisecom's RC002-16 chassis and be SNMP managed with a management card; RC601-FE provides both modular and standalone design as remote unit and can be remotely managed by RC602-FE.

Feature

Construction	RC602-FE (E): local module which is supported in Raisecom's RC002-16 chassis and be SNMP managed with a management card; RC601-FE (E): remote standalone unit and can be remotely managed by RC602-FE; RC601-FE (E)-C: remote modular unit supported in RC001-1 single slot chassis and can be remotely managed by RC602-FE;
Fiber link option	Dual-strand fiber
Transmission distance	Dual-strand fiber: up to 120km
Auto Negotiation	The auto negotiation of electrical port allows RC601/602-FE to perform automatic configuration to achieve the best possible mode of operation over a link. You also can disable this feature to avoid the mode of operation dropping to the least common denominator when connecting with a non-negotiating device (i.e. 100Mbps, half-duplex).
MDI/MDIX auto sensing	Automatically detects and configures the copper port on the converter to the correct MDI or MDI-X configuration. This feature eliminates an entire category of troubleshooting
Fault-Pass-Through	Fault-Pass-Through is a troubleshooting feature that allows the media converter to monitor the optical link by shutdown the copper port if there is loss of signal on optical link
Loopback	Loopback function enables network diagnostics from local or remote site (from RC602-FE to RC601-FE), this provides a flexible method for troubleshooting and is prohibitive to increase truck roll and other maintenance costs.
Remote management	Configure and monitor the remote end unit through local module, this feature greatly decreases the truck roll and logistic costs.

Typical Application



Specification

Fixed Port	1*Optical port 1*Copper port
Indicators:	Power Supply RMD for remote unit RLK for optical port TLK for optical port ACT for optical port LNK/ACT for copper port 100M for copper port FDX for copper port
Speed	100M for optical port 100M for copper port
Dimension	Standalone: 120(W)*157(D)*32(H)mm Modular: 91(W)*155(D)*25(H)mm
Power supply	AC: 90~264V, 47~63Hz DC: 36~75V
Power consumption	≤ 5W (at max load)
Working ambience	Temp: 0~45 centigrade RH: 20~90% non-condensing
Storage ambience	Temp: -25~85 centigrade RH: 20~90% non-condensing
Safety Compliance	CE, UL and NEBS

Ordering Information

Part Number	Optical Connector	Wavelength (nm)	RX sensitivity (dBm)	Tx Power (dBm)	Typical distance (km)	Attenuation (dB/Km)
RC601-FE(E)-M	SC	1310	<-29	-18- -14	0-2	3
RC601-FE(E)-S1	SC	1310	<-34	-15- -8	0-25	0.5
RC601-FE(E)-S2	SC	1310	<-34	-5- 0	10-60	0.5
RC601-FE(E)-S3	SC	1550	<-36	-5- 0 (DFB)	15-120	0.25
*RC601-FE(E) is standalone unit in remote site						
RC601-FE(E)-M-C	SC	1310	<-29	-18- -14	0-2	3
RC601-FE(E)-S1-C	SC	1310	<-34	-15- -8	0-25	0.5
RC601-FE(E)-S2-C	SC	1310	<-34	-5- 0	10-60	0.5
RC601-FE(E)-S3-C	SC	1550	<-36	-5- 0 (DFB)	15-120	0.25
*RC601-FE(E)-C is modular unit in remote site						
RC602-FE(E)-M	SC	1310	<-29	-18- -14	0-2	3
RC602-FE(E)-S1	SC	1310	<-34	-15- -8	0-25	0.5
RC602-FE(E)-S2	SC	1310	<-34	-5- 0	10-60	0.5
RC602-FE(E)-S3	SC	1550	<-36	-5- 0 (DFB)	15-120	0.25
*RC602-FE(E) is modular unit in local site						

Compliance

Standards & protocols	IEEE802.3x full duplex on 100BaseTX IEEE802.3u 100BaseTX
-----------------------	---